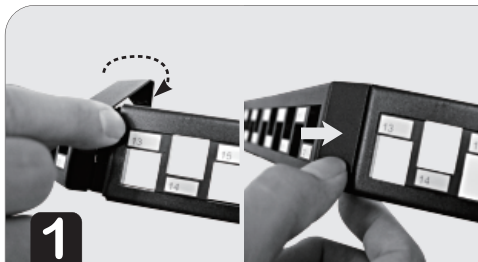


Installation Instructions

nflexon 700 Central Expy. S. Suite 400
Allen, TX 75013 | 855-NFLEXON (855.635.3966)

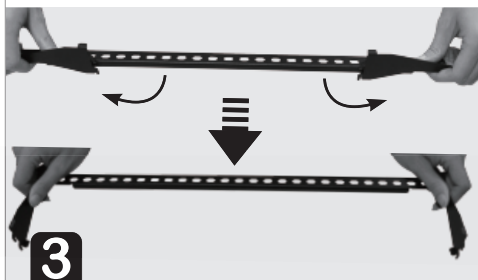
V-Shape Angled Patch Panel



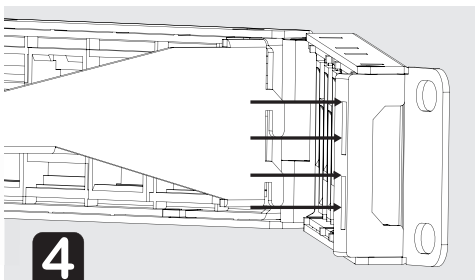
1 Snap the cap onto the front of the panel.



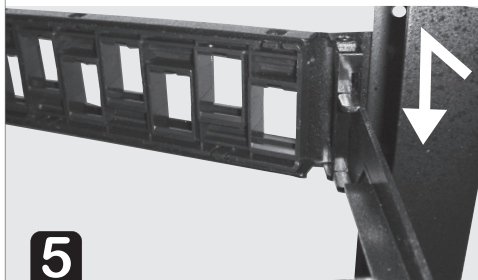
2 Attach the panel to the rack.



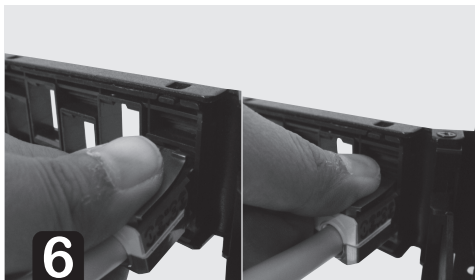
3 Unfold the rear cable tie bar.



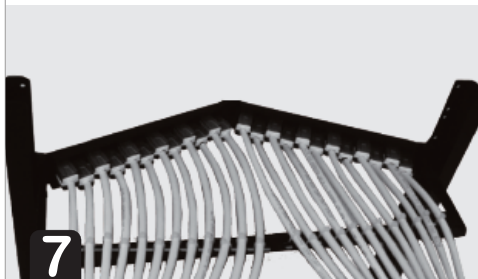
4 Detailed view of cable tie bar attachment to patch panel.



5 Attach the cable tie bar to the panel.



6 Install Keystone Jacks or Couplers into the panel.



7 Use supplied cable ties to fasten each cable.



8 Installation completed.