

Installation Instructions

Patch Panel

Cat 5e / Cat 6

Color Codes on T568A
Side of Wiring Label



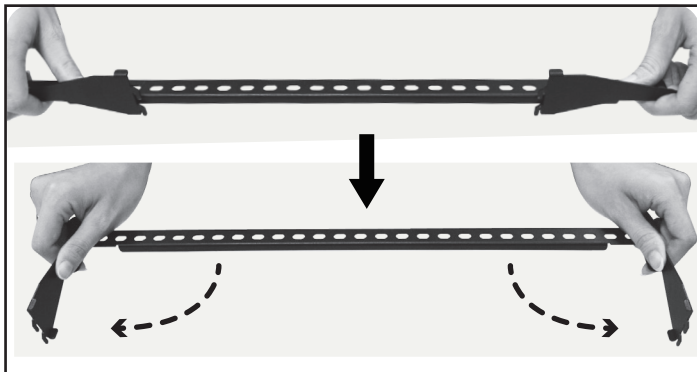
T568A

Color Codes on T568B
Side of Wiring Label

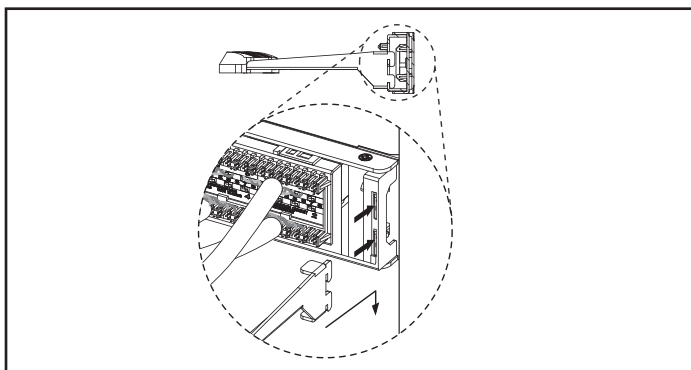


T568B

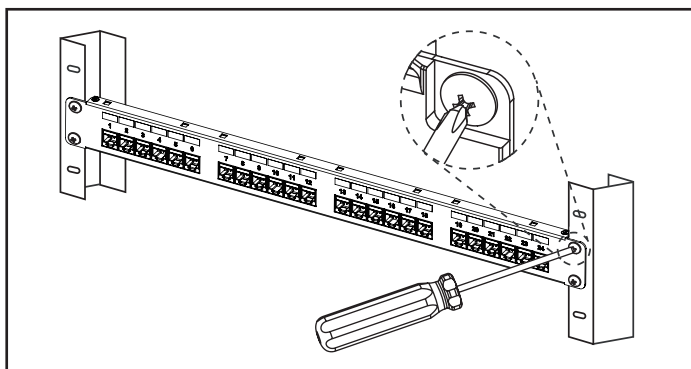
Fig.1 T568A/B wiring scheme



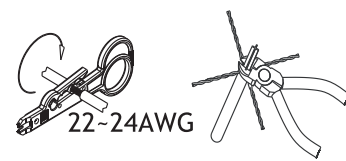
2. Unfold the rear cable tie bar.



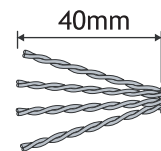
4. Attach the rear cable tie bar to the patch panel.



6. Attach the patch panel to the rack.

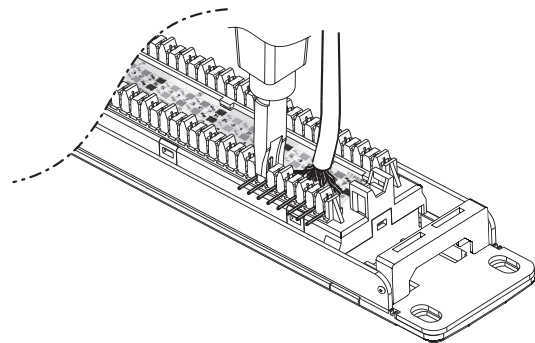


22~24AWG

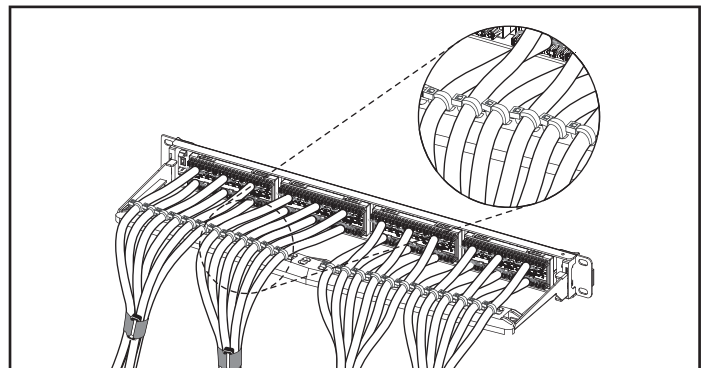


40mm

1. Strip back approximately 40mm (1.5") of cable sheath. Split each pair and cut off the pair separator (on Cat 6 cable)



3. Use a 110/66 punch down tool to terminate each wire according to the desired wiring scheme.



5. Use supplied cable ties to fasten each cable.

Notes:

1. After terminating all cables, use the supplied cable ties to fasten the cables to the cable tie bar to protect & secure the terminations.
2. When terminating cables onto the patch panel, set your impact tool to low impact. Failure to do so will cause damage to the patch panel.
3. Do Not use a 4/5 pair 110 punch down tool as this will damage the IDCs on the back of the patch panel.
4. Do Not install wiring in a wet location or during a lightning storm.
5. Do Not insert a RJ11 6P plug.